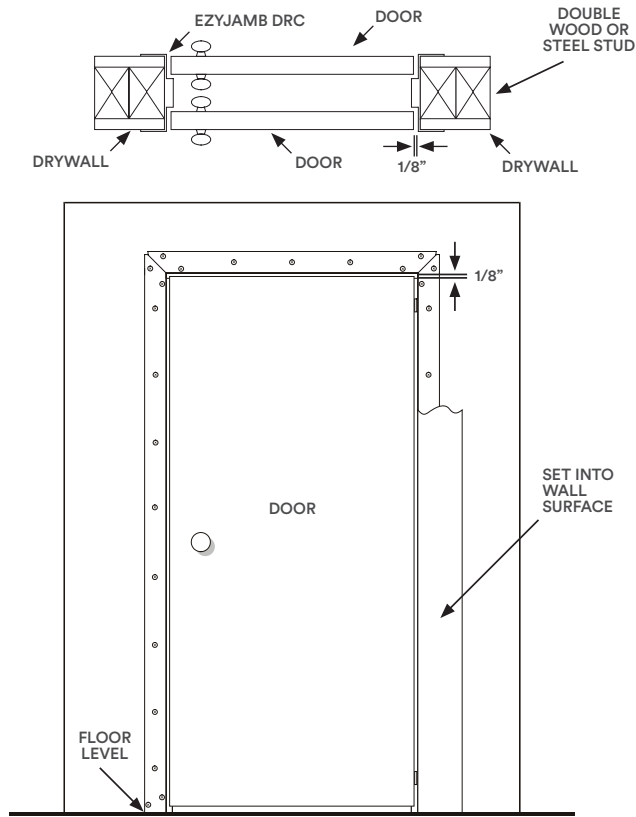
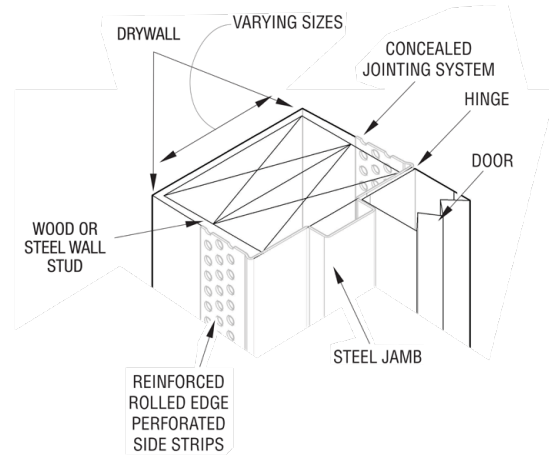


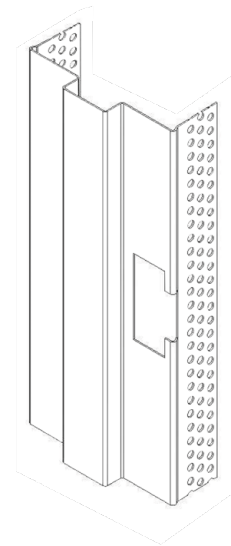
# Product Datasheet



## Installation Detail



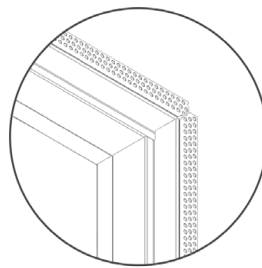
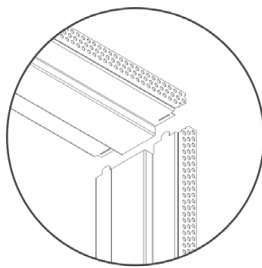
TYPICAL T-STRIKE ASSEMBLY



## Typical Corner Assembly



Fire Rated for up to 90 minutes



## Specification Details

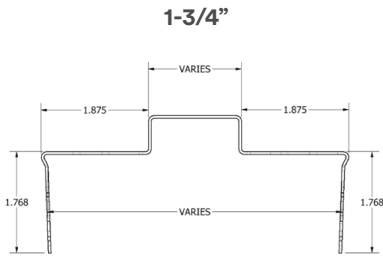
### EzyJamb DRC Double Rebate 18 Gauge Door Frame (For 1-3/4" & 2-1/4" Doors)

Strike Height	Standard Strike Height from bottom of frame to centreline	For 6'8" frame 36"	For 7'0" and 8'0" frames - 38"
Specifications	18 Gauge galvaneal steel door frame for wall thicknesses	3-3/4" - 9-7/8" in 1/8" increments	
Hinge Options	<b>Invisible Hinges</b> RocYork RY-80, RY-120 Tectus 340, 527, 540 Soss 218, 218, 416, 418	<b>Mortise Hinges (.134)</b> 4-1/2" x 4-1/2" Stainless Steel (630)	

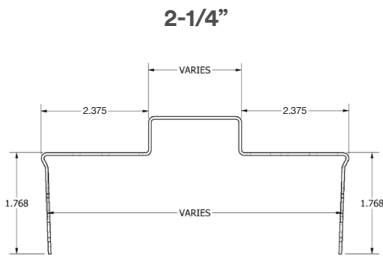
Information contained within this document supersedes all previous versions and is subject to change without notice.

# Product Datasheet

## Preparation Options

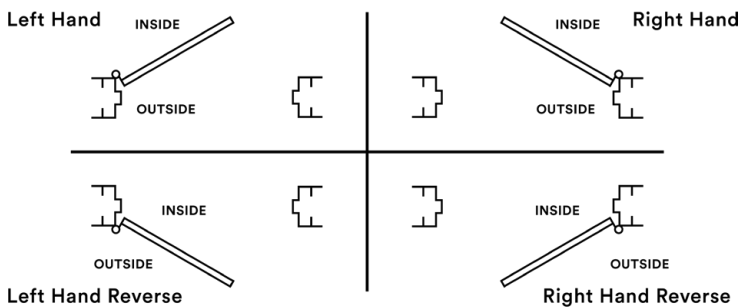


<b>Strike Options</b>	T-Strike ASA Strike DeadBolt HES 8300	Rim Reinforcement No Ha FlushBolt	<b>Pivot Options</b>	Rixson Top Pivot 180 Rixson Intermediate Pivot M19 ABH Top Pivot 018 ABH Intermediate Pivot 019
<b>Hinge Options</b>	4-1/2" Mortise Hinge RocYork RY-60 / RY-80 / RY-120 Soss 218 / 418 Tectus 340 / 527 / 540		<b>Closer Options</b>	LCN 3130 Dorma ITS96 RocYork RYCC60950 PA Reinforcement RocYork RYSC801100
<b>Power Switch</b>	EPT Power Transfer Door Position Switch		<b>Holders and Stops</b>	GJ 100 & 400 Series



<b>Strike Options</b>	T-Strike ASA Strike DeadBolt HES 8300	Rim Reinforcement No Ha FlushBolt	<b>Pivot Options</b>	Rixson Top Pivot 180 Rixson Intermediate Pivot M19 ABH Top Pivot 018 ABH Intermediate Pivot 019
<b>Hinge Options</b>	4-1/2" Mortise Hinge RocYork RY-60 / RY-80 / RY-120 Soss 218 / 418 Tectus 340 / 527 / 540		<b>Closer Options</b>	LCN 3130 Dorma ITS96 RocYork RYCC60950 PA Reinforcement RocYork RYSC801100
<b>Power Switch</b>	EPT Power Transfer Door Position Switch		<b>Holders and Stops</b>	GJ 100 & 400 Series

## North America Door Handing



**i** Hand all doors by standing outside and facing the door.